



43" Curved 4K Monitor

10 point capacitive touch technology

Kontech curved touch display is a kind of touch display product designed for games, high-end places and gambling, such as self-service terminal, game machine, gambling machine, etc. The utility model has the advantages of compact structure, convenient installation and high cost performance. All products adopt multi-point projection capacitance touch technology, which has the characteristics of fast touch response, high precision and strong anti-interference.

Curved touch display product series are equipped with the most advanced projection capacitor (GFF) touch technology, which can support 10 point touch.

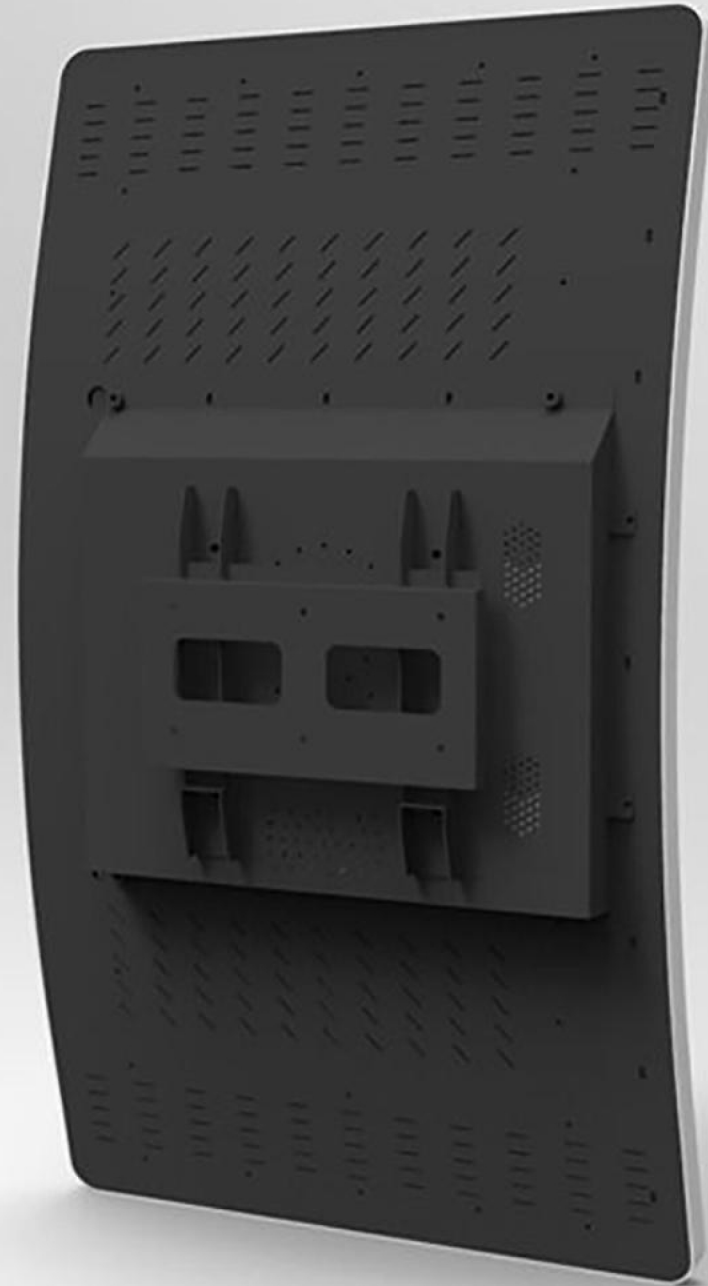




Stronger structure compatibility,
compatible with various stand-alone version,
Android network version,
x86 and other different solutions,
capacitance G + G and non touch (optional).



Compact structure design,
suitable for a variety of installation.
metal shielding structure,
can prevent external electromagnetic
interference, no radiation





Wide voltage range: AC 100-240V (50/60Hz)



Low energy consumption

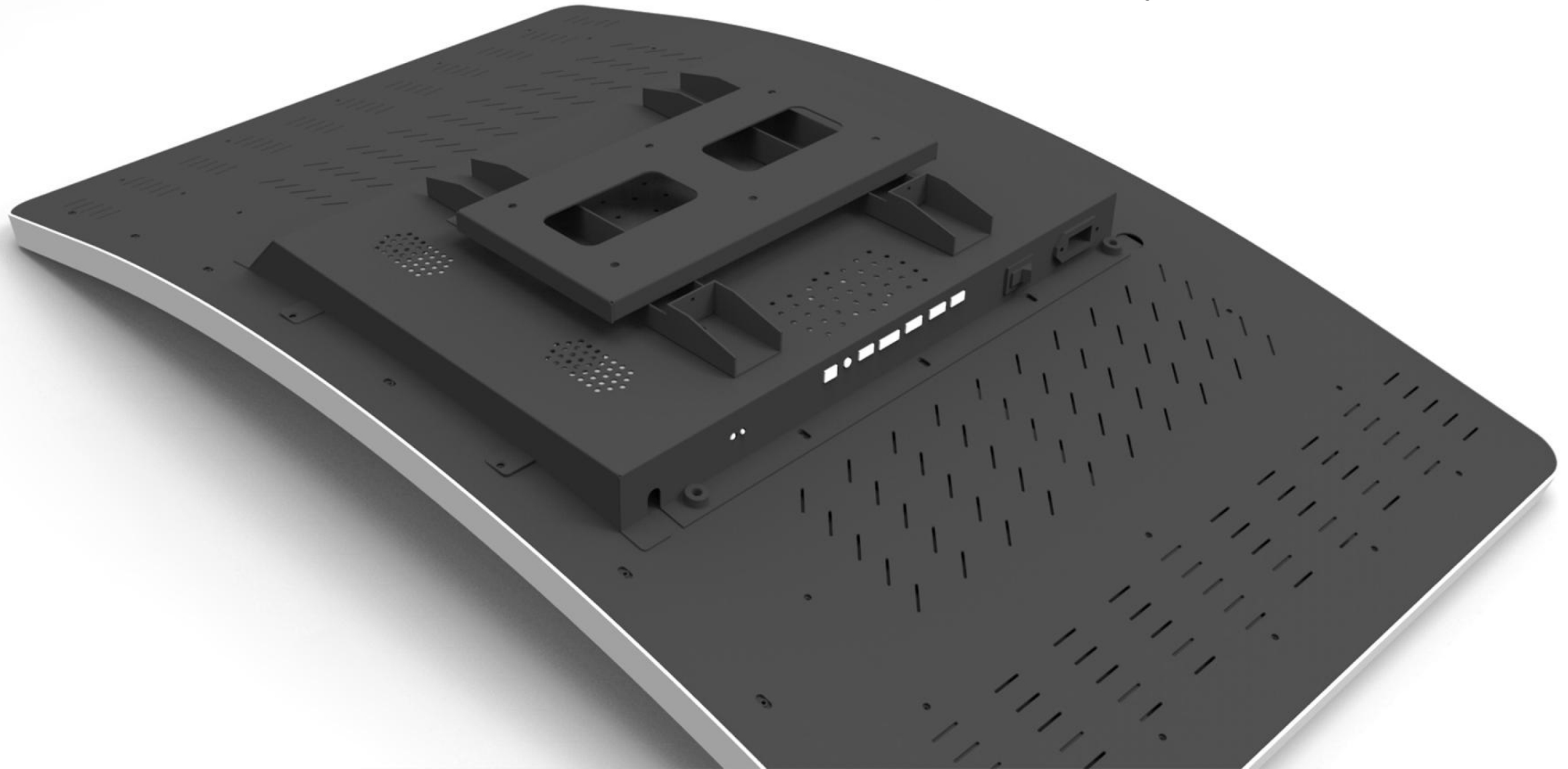


Fast response



On-demand customization

Ultra thin design, novel and beautiful appearance
quick and easy installation



PRODUCT PARAMETERS

Product Name	43"Curved 4K monitor with capacitance-touch technology	
Size	43 inches	
LCD Panel	Display Area	963.6 (H) ×557.9 (V) mm
	Aspect Ratio	16:09
	Backlight	LED
	Backlight life	>50000h
	Resolution	3840×2160
	Lightness	300cd/m²
	Contrast Ratio	1300:01:00
	Video Response time	8ms
	Dot Pitch	0.2451 (H) ×0.2451 (V) mm
	Color	16.7M
	Viewing Angle	Horizontal/Vertical: 178°/178°
Capacitive Screen parameters	Touch Scheme	Projected G+FF capacitive touch technology
	Touch Response Time	<5ms
	Touch Points	Standard 10-point touch (can realize image zoom out and enlargement, etc.)
	Touch Effective Recognition	>1.5mm
	Scanning Frequency	200HZ
	Scanning Accuracy	4096 x 4096
	Communication Method	Full speed USB2.0, USB3.0
	Theoretical Clicks	More than 50million
	Working Current/Voltage	180Ma/DC+5V+/-5%
	Anti-light Interference	Normally display when the strong light of sunlight, incandescent lamp and fluorescent lamp changes
	Touch Data Output Method	Coordinate output
	Surface hardness	Physically toughened, Mohs grade 7 explosion-proof glass
	Operating System Compatibility	Android/Windows
	Drive	Drive-free, plug and play
External Interface	HDMI1.4 Input	1
	HDMI2.0 Input	1
	Touch USB	1
	Headphone Output	1
	AC Power	1
Power Supply	Power Supply	AC220V 50/60Hz
	Maximum Power Consumption	135W
	Standby Power Consumption	0.8W
Operating Environment	Temperature	0~40℃
	Humidity	10~90%RH No condensation
Appearance	Product Dimensions	980.9*572*127.4mm
	Carton Dimensions	1100*705*245mm
	Net Weight	23.95KG
	Gross Weight	26.8KG
	Accessories	Power cord*1, HDMI cable*1, Touch USB cable*1, Remote control*1



KONTECH ELECTRONICS CO.,LTD

TEL：+86-755-29892666

E-mail：sales@kontech.com.cn

Web：https://www.kontechgroup.com/

Add：No.30, Langkou Industrial Park, Longhua New District, Shenzhen, China